



**DATA WAVE**  
for Communication & IT

رؤية  
**2030**  
المملكة العربية السعودية  
KINGDOM OF SAUDI ARABIA

# COMPANY PROFILE

SHAPING THE FUTURE WITH TECHNOLOGY

# OUR QUOTE

Success is our main target.

**“ Success is no accident. It is hard work, perseverance, learning, studying, sacrifice and most of all, love of what you are doing or learning to do. ”**  
*- Pele*

# ABOUT US

Founded in 2017, Data Wave is a Saudi-based systems integration company delivering cutting-edge solutions tailored for today's evolving infrastructure demands. With a team of seasoned professionals, we specialize in the supply, installation, testing, and commissioning of intelligent and efficient low-current systems. Our commitment to innovation and excellence drives every project we undertake.

## OUR VISION

To be a leading force in low current and security systems integrator across the Kingdom of Saudi Arabia, continuously expanding our market share and service offerings, following 2030 kingdom leaders vision.



## OUR MISSION

To empower our clients with advanced systems that elevate security, operational efficiency, sustainability, and convenience. We aim to be the preferred partner in systems integration, recognized for reliability, professionalism, and superior customer experience.

# OUR SERVICES

**We Design, Supply Install Testing and commissioning** for number of services by a professional team who is dedicated to serve and fulfill our client's needs.



## Low Current Systems

We offer BMS, Fire Alarm, Public address, Nurse call, IP TV, IP Phone.



## Security Systems

CCTV, Access control, Parking system, Auto gate,



## IT Systems

Structure Network, Passive network, Active network.



## AI Systems & Services

We offer AI Chat Bot, Agent, Automation & Integration



## Renewable Energy

We offer renewable energy solution for various sectors



## Maintenance Contract

Maintenance by a team of professionals.



Building Management System



Fire Alarm System



Public address System



Low Current Systems

We offer BMS, Fire Alarm, Public address, Nurse call, IP TV, IP Phone.

**IPTV**

IP TV System



IP Phone System



Nurse Call System


 CCTV System

 Access Control System

 Face/Finger Identification System

 Parking Management System

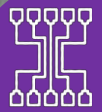
 Project Time lapse System

 Auto Gate System



### Security Systems

**CCTV, Access control,  
Parking system, Auto  
gate, Intruder detection.**



Structure Cabling



Passive Network



Active Network



Cable Termination



Network Testing



IT Systems

Structure Network,  
Passive network, Active  
network.



AI Chat Bot



AI Agent



AI Automation



Integration



AI Systems & Services

We offer AI Chat agent,  
Automation & Integration



**Solar Energy System**



**Rental Solar System**



**Operation & Maintenance**



## Renewable Energy

We offer renewable energy systems such as Solar power system.



Maintenance Contract



Preventive Maintenance



Technical Support



**Maintenance Contract**

Maintenance and support by a team of professional for all our systems.



# Our Client

We build a strong trusted relationship with ur client where we share success dignity, honor and business ethics.





# Our Partners

With our partners we share experience and market where we support each others to achieve our Win Win target.



Clients	Project Description
Nesma & Partners – Riyadh Amana	Scada Communication and BMS integration for Diriyah Tunnel Riyadh
Nesma & Partners – Riyadh Amana	PLC panel for control room for Diriyah Tunnel Riyadh
Jash - KFU	Low current and security maintenance contract for 3 years
Al Manea Hospital	Gate Barrier
CENOMI	Civil & Electrical work for CCTV CONTROL ROOM in Mall of Dhahran
Yasmeen Mall	CCTV, PA, Fire Alarm
Nakheel Mall Damman	CCTV, PA, Fire Alarm
Riyadh Front	CCTV, PA, Fire Alarm
BAE	CCTV, Access Control, Datacenter
SAMA	Fiber Infrastructure
The Logistic Park	CCTV, Fire Alarm, Visitor Management System, Access Control
Jeddah Chamber of commerce	Access Control, Card Printer, Attendance system
King Abdulaziz University	Access control and parking management system
MODON	CCTV system

Clients	Project Description
Al Andalus wedding hall Dammam	Installation testing and commissioning of fire alarm system and CCTV system.
Al-Kadi Tent Factory Dammam	Supply installation testing and commissioning passive network and Access control system
AL-Hayat Plaza Al Khobar	Supply installation testing and commissioning, CCTV and access control system including networking.
Al-Gosaibi Group Dammam.	Installation of office passive network and CCTV system including access control system.
A.H Al –Zamil Group Dammam	Installation of structured cabling passive network
National Medical Services Co. Khobar	Installation of CCTV and access control system
Khalifa Al-Gosaibi Group Dammam	Installation of scada system
Al-Jabar Co. Al-Khobar	Installation of Access control and CCTV system + gate barriers
Olayan Group AL-Khobar	Supply and installation of parking management system
Al Majdoui Group Al- Khobar	Supplying and installation CCTV system and port warehouses
Hayat Plaza Complex Dammam	Supply installation testing and commissioning of CCTV, Access control and Parking system.
Binzagar wall's Co. Al- Khobar	Supply installation testing and commissioning a BMS system Scada.
Al Zahrani Group Dammam	Installation of structure cabling and passive network including CCTV, Access control and Parking system.
Al-Hajri Group Al-Khobar	Supply installation testing and commissioning of CCTV, Access control and Fire system.

**Our company's general policy on safety that encompasses our commitment to safety procedures for all our projects involving Installation and maintenance.**

- 1. The contractor's management recognizes its responsibilities for effective implementation of safety and loss prevention policies within the scope of its contractual requirements for each project. It is proven that industrial projects can be performed safely when it is competently planned, well managed and stringently supervised.**
- 2. The safety program aims to prevent any possible accidents and minimize occurrence of the accidents through effective training and discipline among employees. It also aims at maximizing loss prevention through exercising loss prevention measures in the work site.**
- 3. Majority of accidents occurring at the site, which sometimes result in loss of life and damage to property, are caused by negligence and lack of observation of safety and loss prevention procedures.**
- 4. In keeping with the safety policies required by every company or client to protect life and prevent damage to property, our Project Management has directed an establishment of a safety program aimed at satisfying this and to comply with any of the client's safety Manuals such as Manual of Safety and Loss Prevention has been written and distributed to all concerned personnel involved in the execution of a project.**

The following sections summarized the duties and responsibilities of each personnel involved the company's Safety Organization.

◆ **Project Manager:**

The overall responsibility in implementing loss and prevention programs for any projects shall be that of the project manager. He will be the one delegated by our company to perform the project and enforce client and representative's loss prevention requirements throughout the job site. His main responsibilities relative to Safety and Loss Prevention are as follows:

- Understand thoroughly the client's and project representative's safety policies and implement each step to the level of their satisfaction.
- Ensure that safety policies tendered are adequate to cover sound working methods and reasonable welfare facilities.
- Determine at the planning stages the most appropriate order and method of working provision for adequate lighting and rights-of-way.
- Provide written instruction to establish working method and explain the sequence of operations outline potentials hazards at each stage and indicate precautions to be adopted.
- Check over working methods and precautions with site supervisor and craft foremen before commencing the work.
- Create safety awareness by promoting safety meetings and talks, and encouraging safety training.
- Set personal example on the site by wearing appropriate protective clothing and using safety equipment at all times.

## ◆ Safety Manager / Engineer:

The Safety Manager/ Engineer is the one responsible for the establishment of and effective safety program that is based upon safety policies and meets the company's contractual responsibilities. He will report directly to the Project Manager if any safety related problems that occur in the job site. His Principal responsibilities encompasses the following duties:

- Advise the Project Manger on the contractual and legal safety requirements relative to the project.
- Provide general counsel, guidance and direction to the joint supervisors and employees.
- Ensure that effective safety procedures are followed by all personnel to attain compliance with all safety program requirements both of the clients and the company's Safety Guidelines.
- Carry our daily site inspection and report to see that safe work methods are being implemented health and safety requirements are being observed that the welfare and first aid facilities are adequate and properly prepared.
- Do his best to prevent injury to personnel, damage to plant and equipment, fires and to suggest ways to improve existing work method to determine the cause of any accident, dangerous occurrences, and recommend means of preventing recurrence.
- Conduct weekly safety meetings with the workers and keep a record of it. Keep the recording and analysis of information on injuries, damages and production loss after investigating the incidents. Attend job progress meetings where safety is an item in the agenda. Assist training employees at all levels.

# MATERIAL & EQUIPMENT TOOLS

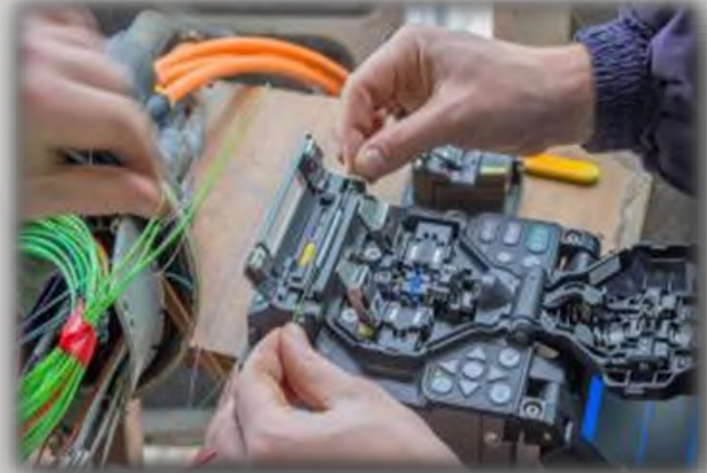
- ◆ The company shall supply materials, tools, and equipment whenever required by the contract for the successful completion of the work. All materials supplied shall be new. Materials for the Project shall meet or exceed all required standards, specifications and schedule requirements as defined elsewhere in this contract. The company shall abide by all Ministerial decrees pertaining to the use of locally manufactured materials.
- ◆ Should the need to import materials, tools and equipment arise during the course of the project, the Company shall submit a list for approval prior to ordering. All importation of materials shall conform with the existing Import and Customs Law of Saudi Arabia. It is understood that the aforementioned laws and regulations prohibit the importation into Saudi Arabia of products or components based on the following.
  - Originated from Saudi Arabia.
  - Manufacture, produced or furnished by companies organized under the laws of Saudi Arabia.
  - Manufactured and produced or furnished by nationals or residents of Saudi Arabia.
- ◆ In case such as periods wherein Client-supplied materials, tools and equipment are placed under the Company's care, the Company shall be responsible for safeguarding such items and ensure that they are treated with due care and maintained, used and / or operated in a prudent manner. All unused materials, tools and equipment shall be returned in as good a condition as when received, normal wear and tear excepted. All measures shall be taken to ensure the safeguard and care of such items as required. The matter of security and safeguarding of the above shall be coordinated with concerned departments.

# INSPECTION & TESTING

## INSPECTION AND TESTING AT WORK SITE:

- ◆ The Company shall coordinate all inspection and testing for all component part installed with the contractor. Complete coordination with the Company and Client representatives shall be enforced during the performance of the work at all the times. Full cooperation shall be extended to the above representatives in reviewing and inspecting all aspects of the work being performed, or witness whatever tests are required or necessary for the project or job at hand.
- ◆ Should testing or inspection be conducted by the Client, the Company shall provide assistance for the safe and efficient performance of such inspections or tests at no additional cost.
- ◆ The Company shall advice in writing of any test to be witnessed by the Client and / or its representative sufficiently in advance to ensure the formers attendance. Unless otherwise specified by the Client, such prior advice shall be given at least 7 days prior to the scheduled test.







Yassmin Mall



Nakheel Mall



Logistic City



Mall of Dhahran



**King Abdulaziz University**



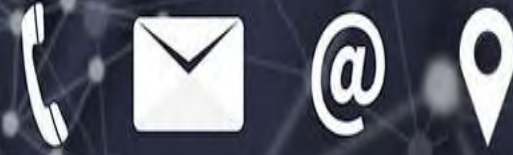
**Jeddah Chamber of Commerce**



**King Faisal University**



**Diriyah Tunnel**



OUR TEAM IS ALWAYS READY TO ANSWER ALL YOUR ENQUIRIES

**MOBILE**

+966 501910826

**WEBSITE**

[www.datawave-sa.com](http://www.datawave-sa.com)

[info@datawave-sa.com](mailto:info@datawave-sa.com)



**LOCATION**

Shati Distinct

Dammam City

Box 7736 Dammam

Kingdom of  
Saudi Arabia

The background is an aerial view of a city skyline at sunset. The sky is a mix of orange, yellow, and blue. The city is filled with various skyscrapers and buildings. The Data Wave logo is overlaid on the top left, featuring a stylized 'D' with circuitry patterns. The text 'DATA WAVE' is in large white letters, and 'for Communication & IT' is in smaller green letters below it.

**D**ATA WAVE  
for Communication & IT

**THANK YOU!**

---



[www.datawave-sa.com](http://www.datawave-sa.com)

[info@datawave-sa.com](mailto:info@datawave-sa.com)

